



Manufacturer of 19-inch Racks
and Metal Enclosures of Our
Own Design



**19-INCH RACKS
WALL MOUNTED RACKS
INTERNET SWITCHBOARDS
METAL ENCLOSURES
ACCESSORIES**



Signati company is a manufacturer of server cabinets/racks, telecommunication cabinets/racks and metal enclosures of our own design. Our offer covers complete solutions, including accessories and equipment. The cabinets/racks are manufactured entirely in Poland, according to the EIA-310 guidelines.

Since 2009 we continue launching new products and develop our machine park. Currently, we have a production line equipped with modern CNC turret press and digitally controlled machine tools.

We specialise in manufacturing custom cabinets/racks and metal housings for the needs of various consumers (e.g. for the industry, government, education and others). Upon request, we manufacture cabinets/racks in any colour, size and with different characteristics, even if the order covers only one item.

TABLE OF CONTENTS

SERVER CABINETS/RACKS RACK 19" FLOOR-STANDING



5

DISTRIBUTION CABINETS RACK 19" WALL MOUNTED



14

CUSTOM CABINETS/RACKS



20

RACKS 19"



27

INTERNET SWITCHBOARDS



28

RACKS/CABINETS EQUIPMENT

30

**OUR APPROACH TO EACH TASK IS STRICTLY PROFESSIONAL,
SO WE HAVE GAINED TRUST OF MANY COMPANIES INCLUDING:**

- Jagiellonian University in Kraków, Poland – Faculty of Physics, Astronomy and Applied Computer Science and the server room
- Stanisław Staszic University of Mining and Metallurgy in Kraków, Poland
- Research and Development Centre for Marine Science Centre S.A.
- Polish Embassy in Beirut
- Telekomunikacja Polska S.A. / Orange Polska S.A. – Stadiony Euro 2012
- Municipal Roads Maintenance Authority in Grudziądz, Poland
- Warsaw Police Headquarters in Warsaw, Poland
- Polish Radio - Regional Broadcasting Station in Kraków, Poland „RADIO KRAKÓW”
- BESEL S.A. Electric Motors Factory
- Bank Société Générale
- TVN S.A.

1. SERVER CABINETS/RACKS 19" FLOOR-STANDING

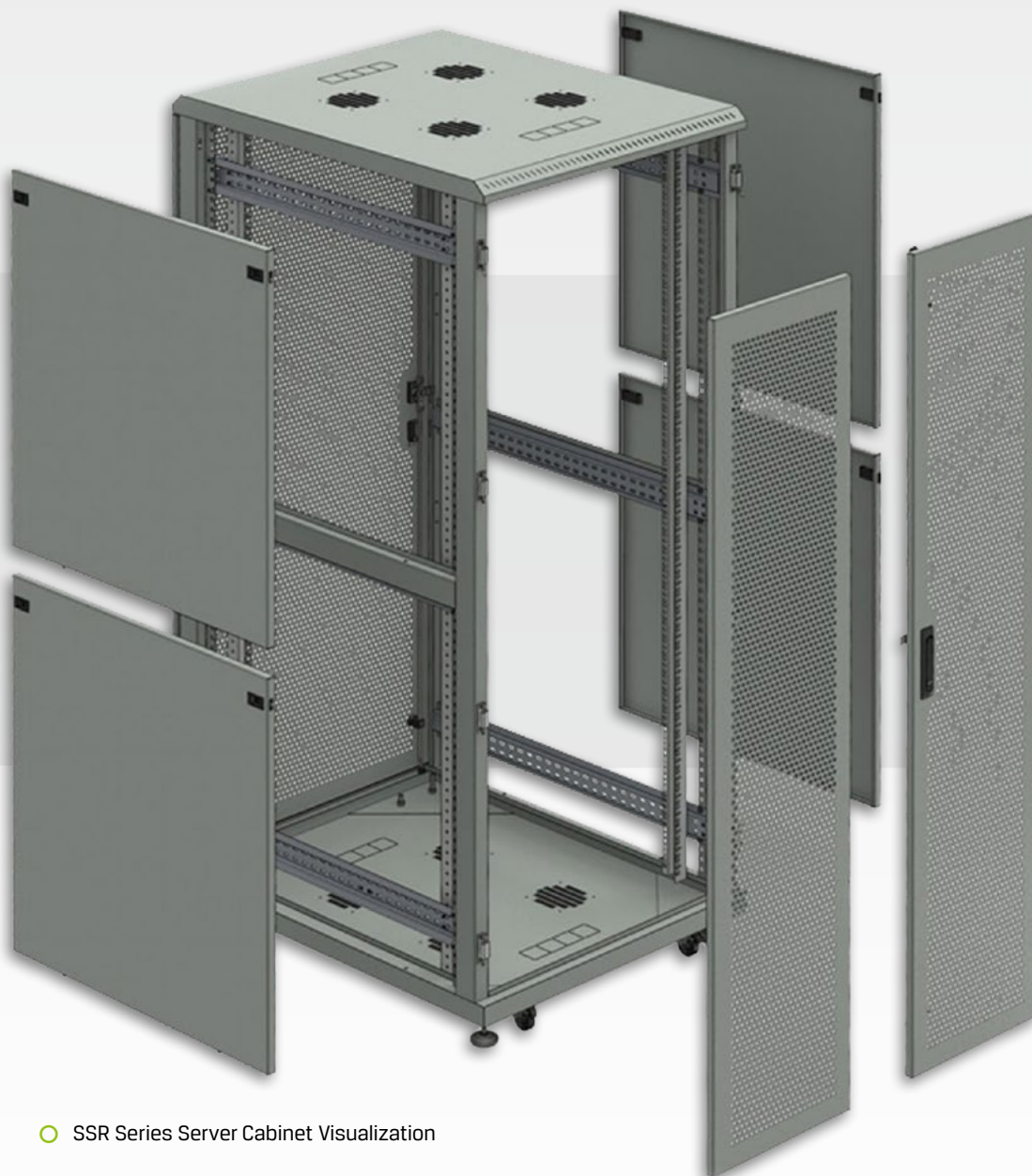
Server cabinets are designed for mounting large servers, disk arrays, power protection devices (including heavy batteries) and other RACK-type equipment. They are mainly used in server computers, recording studios, research laboratories and production halls. Usable cabinet height is defined by means of U units. Manufacturers also use this unit to specify the height of the RACK-type equipment. One U unit is equal to 44.45 mm.

We offer seven standard usable height cabinets starting with 12U cabinet and ending with the 47U cabinet.

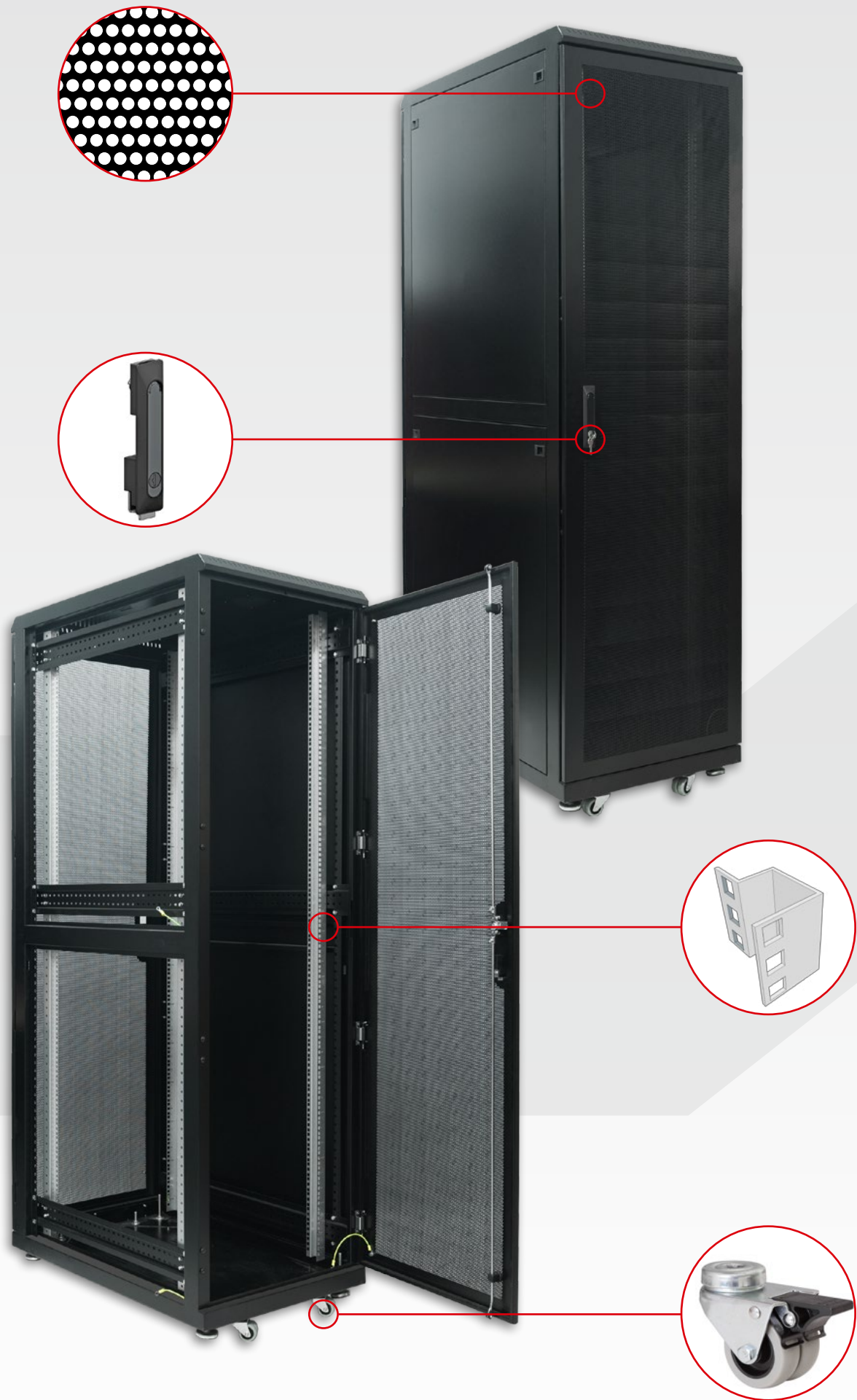
RACK-type cabinets are made in the following dimensions: 600 mm and 800 mm wide and 1000 mm and 1200 mm deep.

Standard models of cabinets are painted in the following colours: RAL 9005 (black) or RAL 7035 (light gray). At your request, we can paint the cabinet with any colour from the RAL palette. Special paints are also available, for example antistatic paints.

We can manufacture and configure the RACK-type equipment taking into account the customer demands as our technical capabilities allow. Custom solutions are priced on an individual basis.



○ SSR Series Server Cabinet Visualization

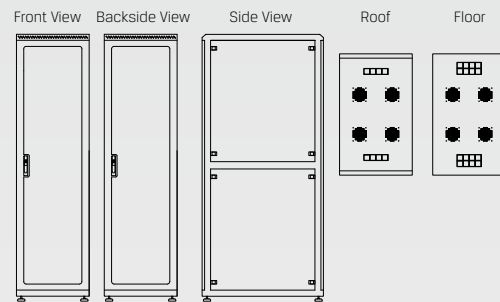


○ SSR-42-600x1000 Server Cabinet in RAL9005 colour

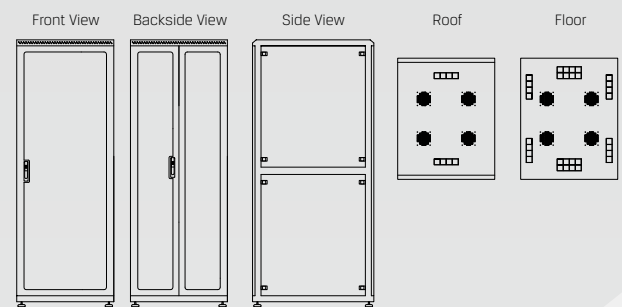
TECHNICAL DESCRIPTION OF RACK CABINETS SSR SERIES:

	12U	15U	19U	24U	32U	42U	47U
Body	Stable and robust construction made of welded steel sheet 1.5-2 mm thick Cabinets are delivered entirely assembled.						
Frame	By default, painted with matt structured powder coating in colours: RAL7035 (light gray) or RAL 9005 (black).						
Front door				Single-leaf, perforated, closed with a three-point lock, HS-type with a swing door handle.			
Back door	Single-leaf, perforated, closed with a single-point lock.			Single-leaf, perforated, closed with a three-point lock, HS-type with a swing door handle (cabinets 600 mm wide) and double leaf, perforated, vertically divided closed with a three-point lock, HS-type with a swing door handle (cabinets 800 mm wide).			
Sides	Removable side panels (one on each side), snap closed (optional lock), so that convenient and easy access from all sides is possible.			Removable side panels (two pieces on each side), snap closed (optional lock), so that convenient and easy access from all sides is possible.			
RACK Profiles	Inside the cabinet, on horizontal guides front and rear Rack-type mounting profiles were mounted. Possibility to switch RACK profiles spacing easily, according to the dimensions of your equipment.						
Side rails	With the side rails, you may mount the vertical cable organizers or power strips.						
Roof	Roof with perforation in the front and rear part to improve ventilation and cooling inside the cabinet. Equipped with two rows of microbridges to put the wiring inside and four 120 x 120 mm holes, where fans can be mounted.						
Floor	Designed to the put wiring inside (two rows of microbridges) and connecting ventilation (by default four 120 x 120 mm holes designed for mounting fans).						
Earthing	Cabinets components connected by means of earthing conductors in a standardised yellow-green colour.						
Cabinet positioning	Self-levelling, height-adjustable feet.						

47U SERVER CABINET SSR SERIES



The design of the 600 mm wide cabinet

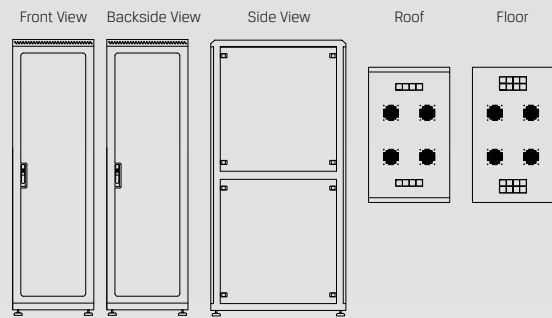


The design of the 800 mm wide cabinet

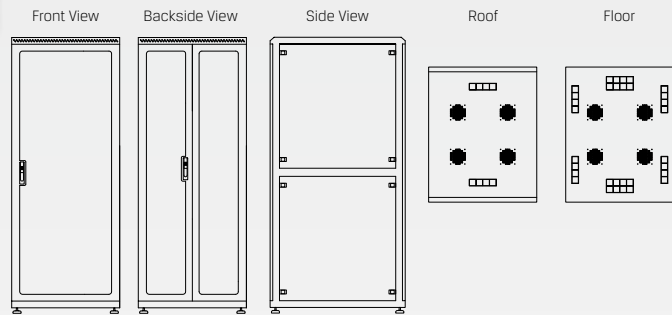
DIMENSIONS AND SPECIFICATIONS

Symbol	Height [U]	Height [mm]	Width [mm]	Depth [mm]	Door Inside Diameter [mm]
SSR-47-600x600	47	2160	600	600	2089
SSR-47-600x800	47	2160	600	800	2089
SSR-47-600x1000	47	2160	600	1000	2089
SSR-47-600x1200	47	2160	600	1200	2089
SSR-47-800x600	47	2160	800	600	2089
SSR-47-800x800	47	2160	800	800	2089
SSR-47-800x1000	47	2160	800	1000	2089
SSR-47-800x1200	47	2160	800	1200	2089

42U SERVER CABINET SSR SERIES



The design of the 600 mm wide cabinet

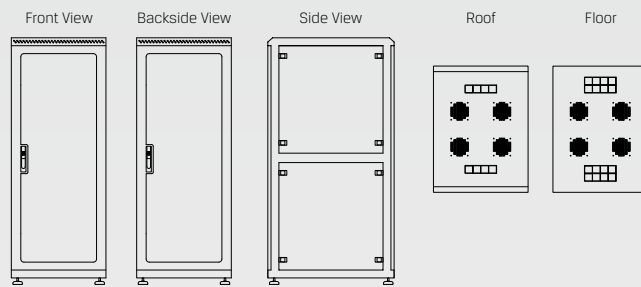


The design of the 800 mm wide cabinet

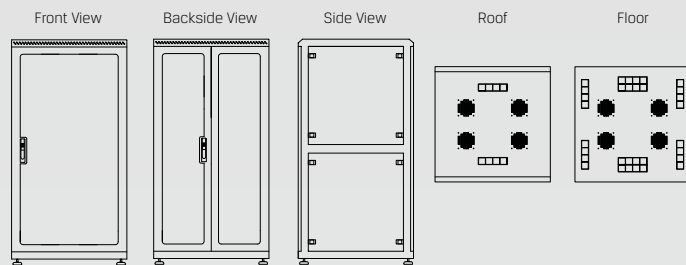
DIMENSIONS AND SPECIFICATIONS

Symbol	Height [U]	Height [mm]	Width [mm]	Depth [mm]	Door Inside Diameter [mm]
SSR-42-600x600	42	2000	600	600	1867
SSR-42-600x800	42	2000	600	800	1867
SSR-42-600x1000	42	2000	600	1000	1867
SSR-42-600x1200	42	2000	600	1200	1867
SSR-42-800x600	42	2000	800	600	1867
SSR-42-800x800	42	2000	800	800	1867
SSR-42-800x1000	42	2000	800	1000	1867
SSR-42-800x1200	42	2000	800	1200	1867

32U SERVER CABINET SSR SERIES



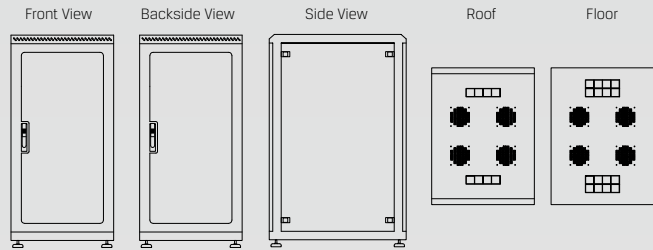
○ The design of the 600 mm wide cabinet



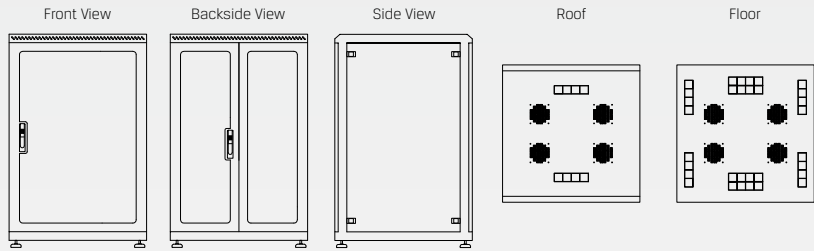
○ The design of the 800 mm wide cabinet

DIMENSIONS AND SPECIFICATIONS

Symbol	Height [U]	Height [mm]	Width [mm]	Depth [mm]	Door Inside Diameter [mm]
SSR-32-600x600	32	1520	600	600	1422
SSR-32-600x800	32	1520	600	800	1422
SSR-32-600x1000	32	1520	600	1000	1422
SSR-32-600x1200	32	1520	600	1200	1422
SSR-32-800x600	32	1520	800	600	1422
SSR-32-800x800	32	1520	800	800	1422
SSR-32-800x1000	32	1520	800	1000	1422
SSR-32-800x1200	32	1520	800	1200	1422



The design of the 600 mm wide cabinet

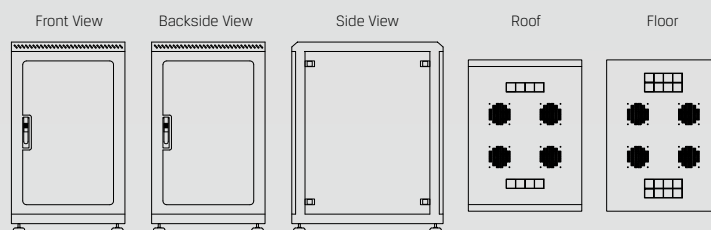


The design of the 800 mm wide cabinet

DIMENSIONS AND SPECIFICATIONS

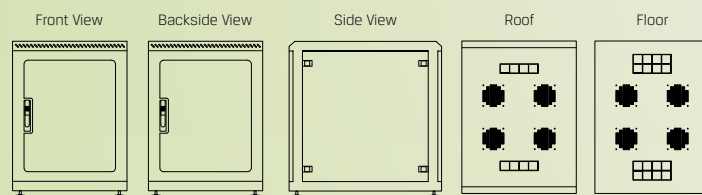
Symbol	Height [U]	Height [mm]	Width [mm]	Depth [mm]	Door Inside Diameter [mm]
SSR-24-600x600	24	1200	600	600	1067
SSR-24-600x800	24	1200	600	800	1067
SSR-24-600x1000	24	1200	600	1000	1067
SSR-24-600x1200	24	1200	600	1200	1067
SSR-24-800x600	24	1200	800	600	1067
SSR-24-800x800	24	1200	800	800	1067
SSR-24-800x1000	24	1200	800	1000	1067
SSR-24-800x1200	24	1200	800	1200	1067

19U SERVER CABINET SSR SERIES



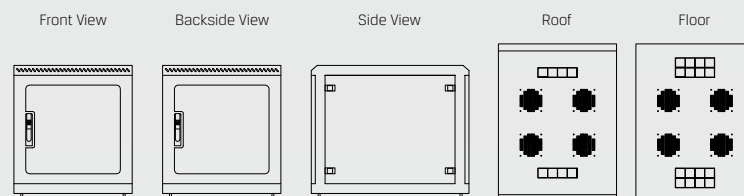
○ The design of the 600 mm and 800 mm wide cabinet

15U SERVER CABINET SSR SERIES



○ The design of the 600 mm and 800 mm wide cabinet

12U SERVER CABINET SSR SERIES



○ The design of the 600 mm and 800 mm wide cabinet

DIMENSIONS AND SPECIFICATIONS

Symbol	Height [U]	Height [mm]	Width [mm]	Depth [mm]	Door Inside Diameter [mm]
SSR-19-600x600	19	960	600	600	844
SSR-19-600x800	19	960	600	800	844
SSR-19-600x1000	19	960	600	1000	844
SSR-19-600x1200	19	960	600	1200	844
SSR-19-800x600	19	960	800	600	844
SSR-19-800x800	19	960	800	800	844
SSR-19-800x1000	19	960	800	1000	844
SSR-19-800x1200	19	960	800	1200	844
SSR-15-600x600	15	785	600	600	667
SSR-15-600x800	15	785	600	800	667
SSR-15-600x1000	15	785	600	1000	667
SSR-15-600x1200	15	785	600	1200	667
SSR-15-800x600	15	785	800	600	667
SSR-15-800x800	15	785	800	800	667
SSR-15-800x1000	15	785	800	1000	667
SSR-15-800x1200	15	785	800	1200	667
SSR-12-600x600	12	650	600	600	533
SSR-12-600x800	12	650	600	800	533
SSR-12-600x1000	12	650	600	1000	533
SSR-12-600x1200	12	650	600	1200	533
SSR-12-800x600	12	650	800	600	533
SSR-12-800x800	12	650	800	800	533
SSR-12-800x1000	12	650	800	1000	533
SSR-12-800x1200	12	650	800	1200	533

SERVER CABINETS/RACKS
19" FLOOR-STANDING

RACK DISTRIBUTION CABINETS
19" WALL MOUNTED

CUSTOM CABINETS/RACKS

RACKS 19"

INTERNET SWITCHBOARDS

RACKS/CABINETS
EQUIPMENT

2. DISTRIBUTION CABINETS **RACK 19" WALL MOUNTED**

Distribution cabinets are designed for mounting network equipment such as switches, hubs, patch cords, modems, routers, CCTV recorders, etc. They are a place where network installations are distributed and protected against unauthorised access.

The new line of cabinets is a **modular design with a fixed width - 600 mm**. The cabinets with width like this, allow you to conveniently install and service devices installed inside.

Depending on the type of equipment installed, the cabinets are available in three versions with different depths:

- 400 mm
- 500 mm
- 600 mm

Cabinets are painted in the following colours: **RAL 7035** (light gray) or **RAL 9005** (black). At your request, the enclosure can be painted with any colour from the RAL palette.

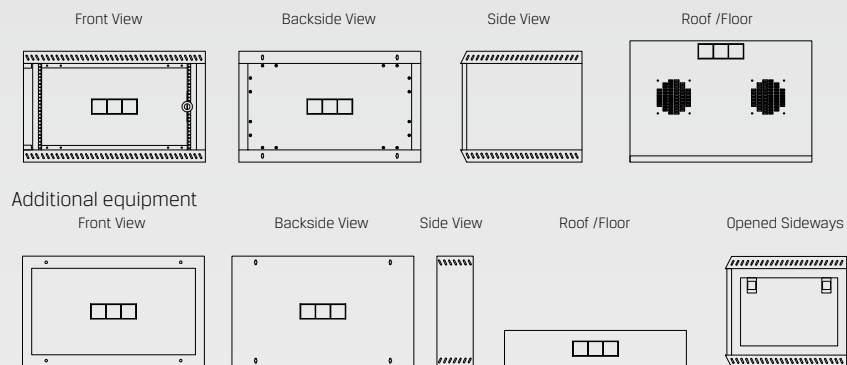


○ SDR Series Distribution Cabinet

TECHNICAL DESCRIPTION OF SDR SERIES DISTRIBUTION CABINETS:

	6U	9U	12U
Body	Made of galvanized steel sheet 1-1.5 mm thick. The whole construction is welded and delivered as assembled - ready to be installed.		
Frame	By default, painted with matt structured powder coating in colours: RAL7035 (light gray) or RAL 9005 (black).		
Door	The door is made of 4 mm thick toughened glass (according to PN-EN 12150-1) standard, equipped with a lock and a handle.		
Rear wall	There are holes in the rear cover for hanging the cabinet.		
Sides	Side walls are available in two versions: full, not removable or opened, closed with a single point lock.		
RACK Profiles	Inside the cabinet, adjustable front and rear RACK mounting profiles were mounted.		
Roof /Floor	In the front and rear part, perforated Roof was mounted to improve air circulation inside. Designed to put wiring inside (two rows of microbridges) and connecting ventilation (by default two 120 x 120 mm holes designed for mounting fans).		
Earthing	Cabinets components connected by means of earthing conductor in a standardised yellow-green colour.		
Additional equipment	Hinged cassette.		

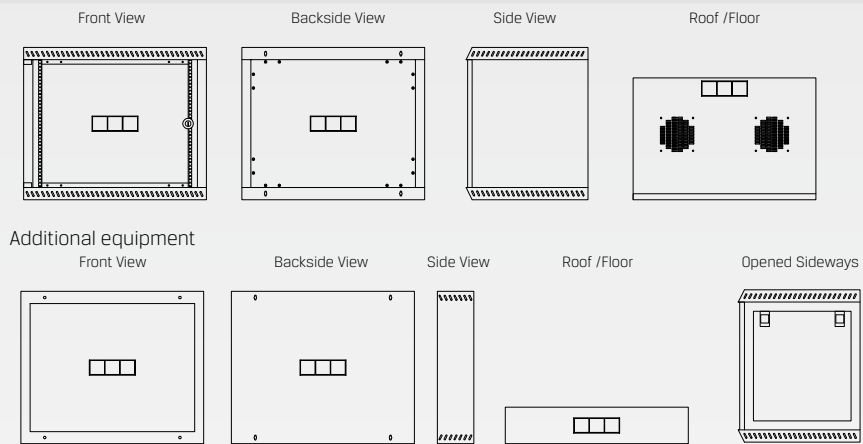
SDR-6 DISTRIBUTION CABINET WALL MOUNTED



DIMENSIONS AND SPECIFICATIONS

Symbol	Height [U]	Height [mm]	Width [mm]	Depth [mm]	Door Inside Diameter [mm]
Distribution cabinets with fixed sides					
SDR-6-400	6	365	600	400	267
SDR-6-500	6	365	600	500	267
SDR-6-600	6	365	600	600	267
Distribution cabinets with opening sides					
SDR-6-400-B	6	365	600	400	267
SDR-6-500-B	6	365	600	500	267
SDR-6-600-B	6	365	600	600	267
Additional equipment – hinged cassette					
KU-6	6	365	600	120	267

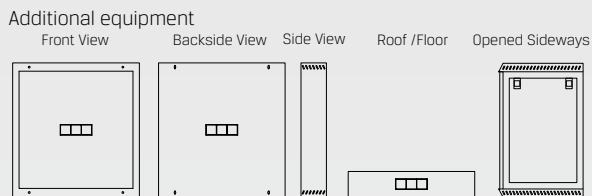
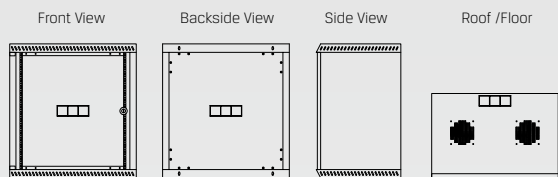
SDR-9 DISTRIBUTION CABINET WALL MOUNTED



DIMENSIONS AND SPECIFICATIONS

Symbol	Height [U]	Height [mm]	Width [mm]	Depth [mm]	Door Inside Diameter [mm]
Distribution cabinets with fixed sides					
SDR-9-400	9	500	600	400	400
SDR-9-500	9	500	600	500	400
SDR-9-600	9	500	600	600	400
Distribution cabinets with opening sides					
SDR-9-400	9	500	600	400	400
SDR-9-500	9	500	600	500	400
SDR-9-600	9	500	600	600	400
Additional equipment – hinged cassette					
KU-9	9	500	600	120	400

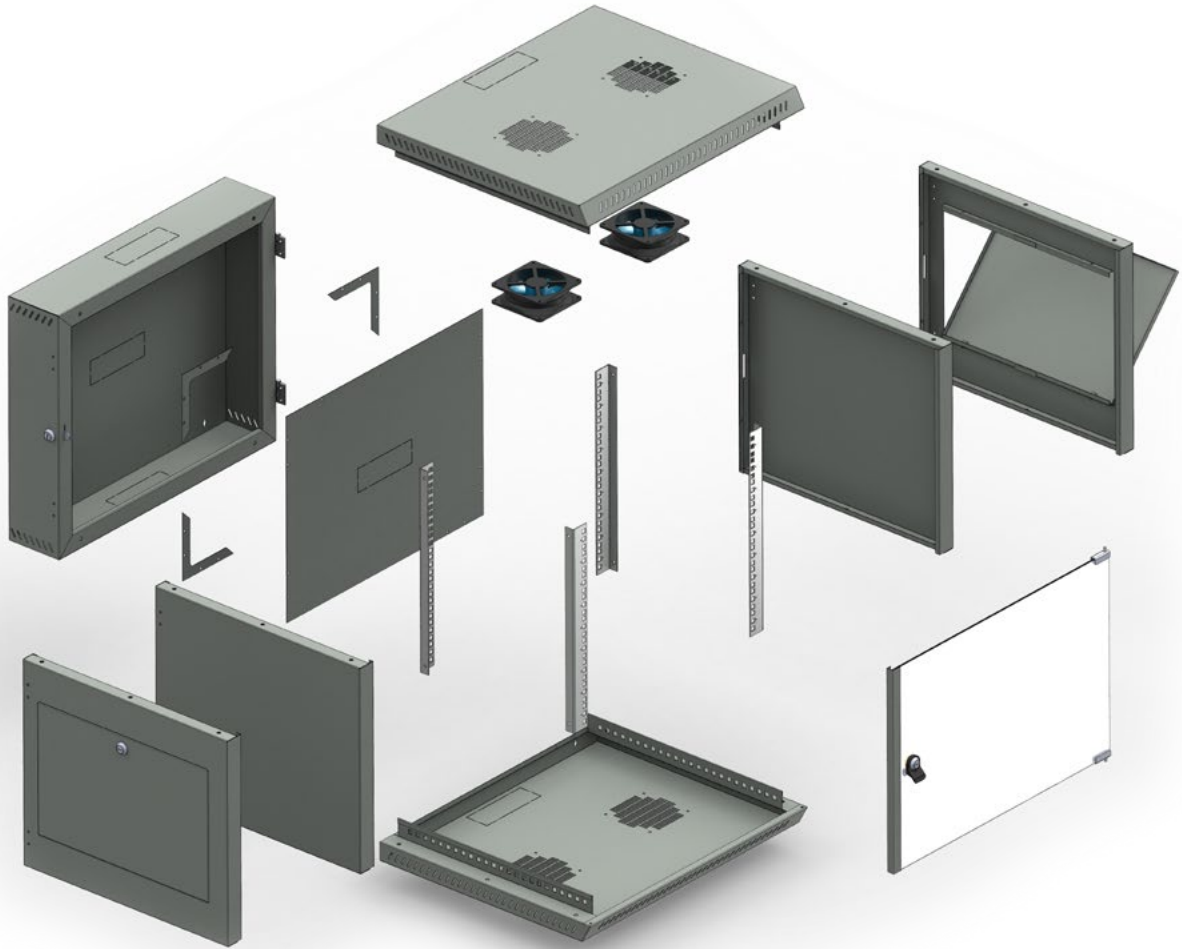
SDR-12 DISTRIBUTION CABINET WALL MOUNTED



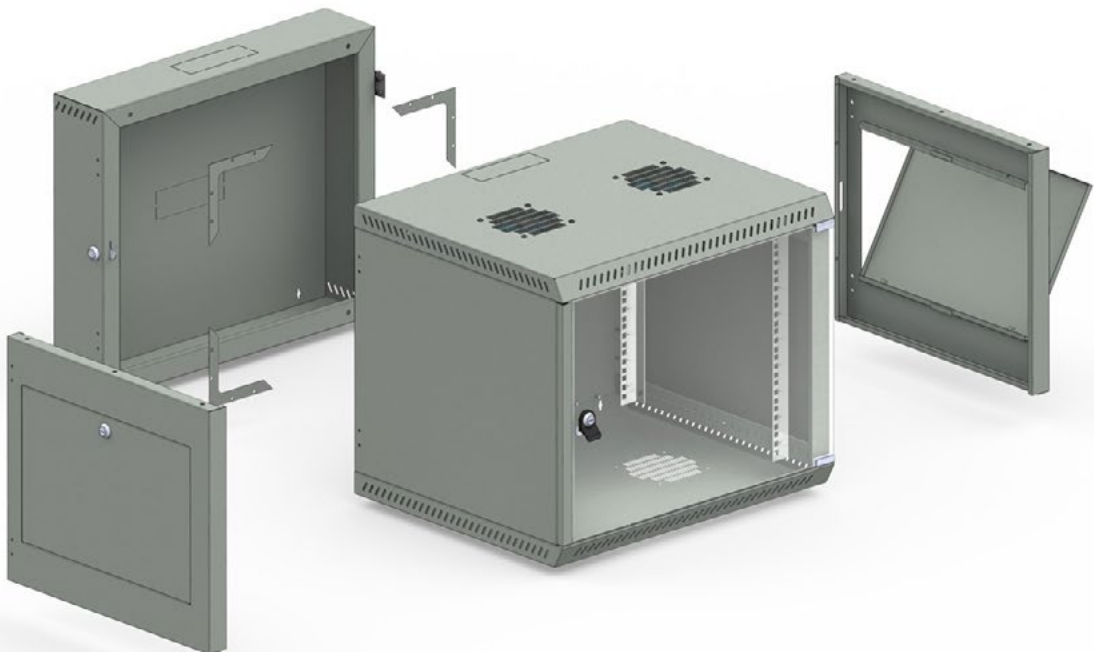
DIMENSIONS AND SPECIFICATIONS

Symbol	Height [U]	Height [mm]	Width [mm]	Depth [mm]	Door Inside Diameter [mm]
Distribution cabinets with fixed sides					
SDR-12-400	12	635	600	400	533
SDR-12-500	12	635	600	500	533
SDR-12-600	12	635	600	600	533
Distribution cabinets with opening sides					
SDR-12-400-B	12	635	600	400	533
SDR-12-500-B	12	635	600	500	533
SDR-12-600-B	12	635	600	600	533
Additional equipment – hinged cassette					
KU-12	12	635	600	120	533

CABINET STRUCTURAL COMPONENTS



CABINET WITH OPTIONAL ACCESSORIES



SERVER CABINETS/RACKS
19" FLOOR-STANDING

RACK DISTRIBUTION CABINETS
19" WALL MOUNTED

CUSTOM CABINETS/RACKS

RACKS 19"

INTERNET SWITCHBOARDS

RACKS/CABINETS
EQUIPMENT

3. CUSTOM CABINETS/RACKS AND METAL ENCLOSURES

As a manufacturer of server cabinets and distribution cabinets, we are open to new technical solutions. We are willing to meet non-standard challenges to satisfy individual customer needs. Any inquiry is priced on an individual basis and no inquiry is left unanswered.

Here are some selected cabinet design customised solutions manufactured for our clients:

COLLOCATION CABINETS

Collocation cabinets are used in Data Center rooms or other locations where it is required to share the RACK cabinet space by more than one user. A separate cable channels and a separate door with a patented lock and a unique code key is supplied to each space.

- 42U 600x1000 collocation cabinet divided into seven separated 6U spaces



- 42U 800x1000 Collocation Cabinet Divided into Two Separate Spaces

RACK ENCLOSURES WITH GLASS DOOR

12U high and 600x800 mm cabinets with glass door and a metal frame. Enclosures customised to the order of retail chains, used to store small computer equipment and switches.



- Floor-standing metal enclosure with a glass door and a metal frame, locked with a single point lock

INCREASED VENTILATION RACKS/CABINETS

A special version of all-around-perforated cabinet with side covers and with space for fans to additionally facilitate ventilation of devices installed inside. This design has been implemented in the server room where air conditioning could not be installed.



- SSR-42-600x1000 cabinet with side ventilation

DOUBLE RACKS/CABINETS WITH A DEDICATED VENTILATION

For one of our customers, we manufactured a double 2x42U rack/cabinet. Since the cabinet was placed in a high-dust room, the cabinets were manufactured as air-tight. Ventilation has been supplied and redirected out of the device using special channels located on both sides.

- Double 42U 800x1000 mm RACK/CABINET



PASSIVE PRE-HEATER CABINETS FOR FIRE FIGHTING EQUIPMENT

1900x1200x1000 mm enclosures for fire-fighting equipment, with pre-heaters installed and a TH-rail-mounted semiconductor temperature controller.

- A cabinet for fire fighting equipment



IP54 OUTDOOR CABINETS

Outdoor cabinets are designed to provide protection for telecommunication equipment and to maintain a suitable temperature, regardless of the variable weather conditions. Enclosures meet the requirements of IP54 protection level. They are protected by anti-corrosion coating and equipped with fans with filters, pre-heaters and a double semiconductor thermostat.



- 600x600x800 IP54 external metal enclosure

METAL ENCLOSURE WITH THE POWER MODULE

RACK 6U enclosure installed in industrial tables, used for mounting Euro Cassettes. Equipped with the electric component with a safety module. Painted with the antistatic powder coating (ESD).



Our company manufactures racks/cabinets and metal enclosures designed for specific requirements, e.g. for copper mines and coal mines. Metal enclosures and cabinets are manufactured in IP54 protection level with special convex gaskets, and a universal butterfly wrench. The bottom of the cabinet is detachable and protected with a seal. In addition to RACK profiles, a detachable mounting plate for the installation of the electrical equipment is mounted inside.



○ IP54 600x600x400 metal enclosure



○ IP54 400x400x250 metal enclosure

○ IP54 185x540x450 metal enclosure

THE FOLLOWING ITEMS, AMONG OTHERS, WERE MADE FOR THE NEEDS OF MINES:

- enclosures with a tilting frame and toughened glass door,
- 32U racks/cabinets with a tilting frame and a mounting plate,
- wall-mounted enclosures for 47" monitors with a hardened glass pane and anti-reflective film,
- IP54 metal enclosures with a mounting plate, RACK profiles and detachable bottom.

INCREASED TIGHTNESS RACKS/ CABINETS



Increased tightness racks/cabinets are used in high-dust and high-humidity places. They are designed primarily for production halls. Additional interior ventilation, the so-called 'gills' that are protected with anti-dust filter were mounted into the sides of the cabinet. This type of the cabinet design maintains the air circulation inside and prevents dust and water penetration inside the cabinet. Top and bottom cable insertions are protected with rubber glands.

- 42U 800x1000 increased tightness cabinet



- For our customer, Telekomunikacja Poland S.A., we completed the order for delivery of IP54 racks/cabinets for all EURO 2012 stadiums



SERVER CABINETS WITH A SPLIT SPACE

1800x600x600 mm size rack/ cabinet divided into three independent parts:

- open space with RACK profiles and the 2U plug panel,
- a cassette with 10U glass door and a limit switch,
- 20U RACK with a metal door.

- 1800x600x600 metal cabinet



INDUSTRY ENCLOSURES FOR COMPUTER EQUIPMENT

PC computer enclosures have been manufactured for the purposes of production halls. Lateral passive and active ventilation was applied inside.



4. 19" RACKS

19" RACKS are used to install network equipment and server equipment in telecommunication rooms or to install laboratory equipment with 19" mounting in rooms for research laboratories.

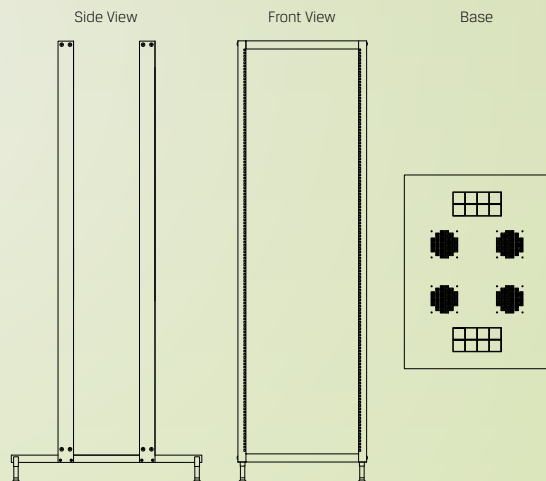
They are constructed of galvanized steel sheet 1.5-2 mm thick, painted with powder coating in colours: RAL7035 (light gray) or RAL 9005 (black).

Racks are made in the standard configuration:

- height - 24U; 36U; 42U
- width - 600 mm
- depth - 600 mm; 800 mm.

On the customer's request, RACKS can be made in any colour and size you select.

Racks are available in two options: with adjustable RACK profiles or with RACK profiles welded permanently to the base.



- 19" 36U 600x800 RACK with adjustable profiles. Components of additional equipment are mounted in the rack: 1U RACK side rails adjustable in the range of 550-900 mm and 19" RACK 2U fixed shelves.

5. INTERNET SWITCHBOARDS

Internet switchboards are dedicated for devices such as routers, modems, switches, etc. They are used to protect the equipment and to protect against unauthorized access. Enclosures are manufactured in anti-burglar option, used in commonly accessible areas, in the IT distribution points.

They are constructed of galvanized steel sheet 1-1.5 mm thick, and painted with powder coating in RAL7035 (light gray) colour.

Front is a removable padlocked full metal sheet with a steel mandrel with a 12 mm diameter, passing through the entire width of the enclosure. Two RACK angle bars are mounted inside to enable installing additional accessories such as mounting plates and mounting panels.



FOUR TYPES OF INTERNET SWITCHBOARDS



○ SIT - 12 int internet switchboard
Dimensions 270 x 300 x 140 mm



○ SIT - 24 int internet switchboard
Dimensions 410 x 300 x 140 mm



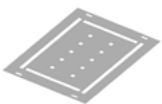
○ SIT - 36 int internet switchboard
Dimensions 540 x 300 x 140 mm



○ SIT-50 int internet switchboard
Dimensions 500 x 500 x 250 mm

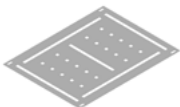
COMPONENTS OF ADDITIONAL EQUIPMENT

We suggest additional equipment to facilitate the permanent installation of equipment:



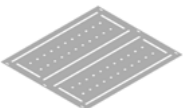
P/M-12 int. Mounting Plate

Dimensions 260 x 210 mm



P/M-24 int. Mounting Plate

Dimensions 260 x 350 mm



P/M-50 int. Mounting Plate

Dimensions 460 x 460 mm



PA-26 int. Mounting Panel

Dimensions 260 x 40 mm



PA-50 int. Mounting Panel

Dimensions 460 x 40 mm

6. RACKS/CABINETS EQUIPMENT

In addition to manufacturing server cabinets and distribution cabinets of our own design, the Signati company also provides IT solutions for small, medium and large companies.

As cabinets equipment, we suggest several groups of additional accessories:

ADDITIONAL OPTIONS FOR CABINET SERVER CABINETS AND DISTRIBUTION CABINETS



Wheel set



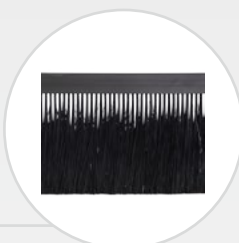
Socket



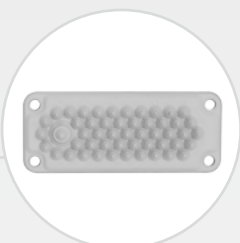
Cabinet handles to facilitate movements



Locks for side covers



Roof and floor brush pass



Rubber gland

RACK 19" ACCESSORIES



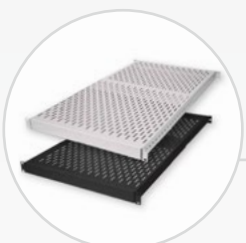
Fixed shelves of various depths and height



Moving shelves of various depths and height



RACK side mounting rails



1U draw shelf within the 550-900 mm range with 170 kg capacity



2U RACK drawer



Cable organizer



40x40, 40x80, 80x80 cable hangers



1U, 2U, 4U, 8U plug panels



RACK mounting kit

VENTILATION AND HEATING



SUNON DP200A-XBT
230V fan

Semiconductor
pre-heater



Anti-dust filter



2/4/6 ventilation panel
for fans with thermostat
and switch



NO/NC Thermostat



Double thermostat



POWER SUPPLY SYSTEMS AND SUSTAINING

230V RACK power
strip or UPS



PDU strips



UPS

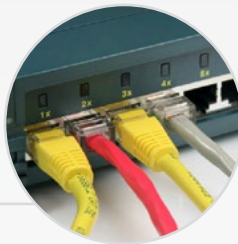


IT EQUIPMENT AND OTHERS

Servers



Switches



KVM



Disk arrays



Patch panel



Patch cords



A4 pocket for
documents





Office Address:



ul. Energetyków 2
32-050 Skawina, Poland

Phone No.: +48 12 44 66 780

Fax: +48 12 44 66 781

biuro@signati.pl

www.signati.pl

www.sklep.signati.pl

Signati company made every effort to ensure that this publication contains full and updated information, but it is for information purposes only. Since the manufacturer develops their products, adjusts them to market requirements and current standards, the manufacturer reserves the right to change the design and specification of equipment.